

GRACE RESIDENCES

PROJECT BRIEFING



vicinity map



- The Project is along Cayetano Boulevard (formerly Levi Mariano Ave.).
- Near CBDs: BGC, Makati, Ortigas

GRACE
RESIDENCES

"For training purposes only. This material may be subject to change and not for reproduction and distribution without prior consent of developer."

buyer's profile

| Country of Origin | % |
|--------------------------|-------------|
| Philippines | 51% |
| United Arab Emirates | 13% |
| United States of America | 9% |
| Singapore | 5% |
| Canada | 5% |
| Other | 18% |
| Grand Total | 100% |

| Profession | % |
|------------------------|-------------|
| Managers/Professionals | 14% |
| OFWs | 10% |
| Non-Managerial | 5% |
| Senior Executives | 5% |
| Others | 66% |
| Grand Total | 100% |

| Province | % |
|--------------|-----|
| Metro Manila | 61% |
| Cavite | 6% |
| Rizal | 5% |
| Laguna | 4% |
| Bulacan | 3% |
| Others | 22% |

| Age Bracket | % |
|--------------|-------------|
| 18-30 | 3% |
| 31-40 | 30% |
| 41-50 | 34% |
| 51-60 | 21% |
| 61-70 | 9% |
| 71-88 | 3% |
| Corporation | 0.4% |
| Total | 100% |

| Reason of Purchase | % |
|----------------------|-------------|
| Second/Vacation Home | 14% |
| Investment | 11% |
| Primary Residence | 8% |
| Other | 67% |
| Grand Total | 100% |

project details

| | |
|--------------------------|----------------------|
| Land Area | 2.62 ha. (6.4 acres) |
| No. of Buildings/Towers: | 4 Towers |
| No of Floors: | 20 physical floors |

| | T1 | T2 | T3 | T4 |
|--------------------------|------|------|------|------|
| 1 Bedroom | | | 40 | 40 |
| 1 BR w/ Balcony | 149 | 1052 | 951 | 970 |
| 1 BR Deluxe with Balcony | 20 | 116 | 118 | |
| 1 BR End Unit w/ Balcony | | | | 118 |
| 2 BR w/ Balcony | 5 | | | |
| TOTAL | 174 | 1168 | 1109 | 1128 |
| Total No. of Units | 3579 | | | |

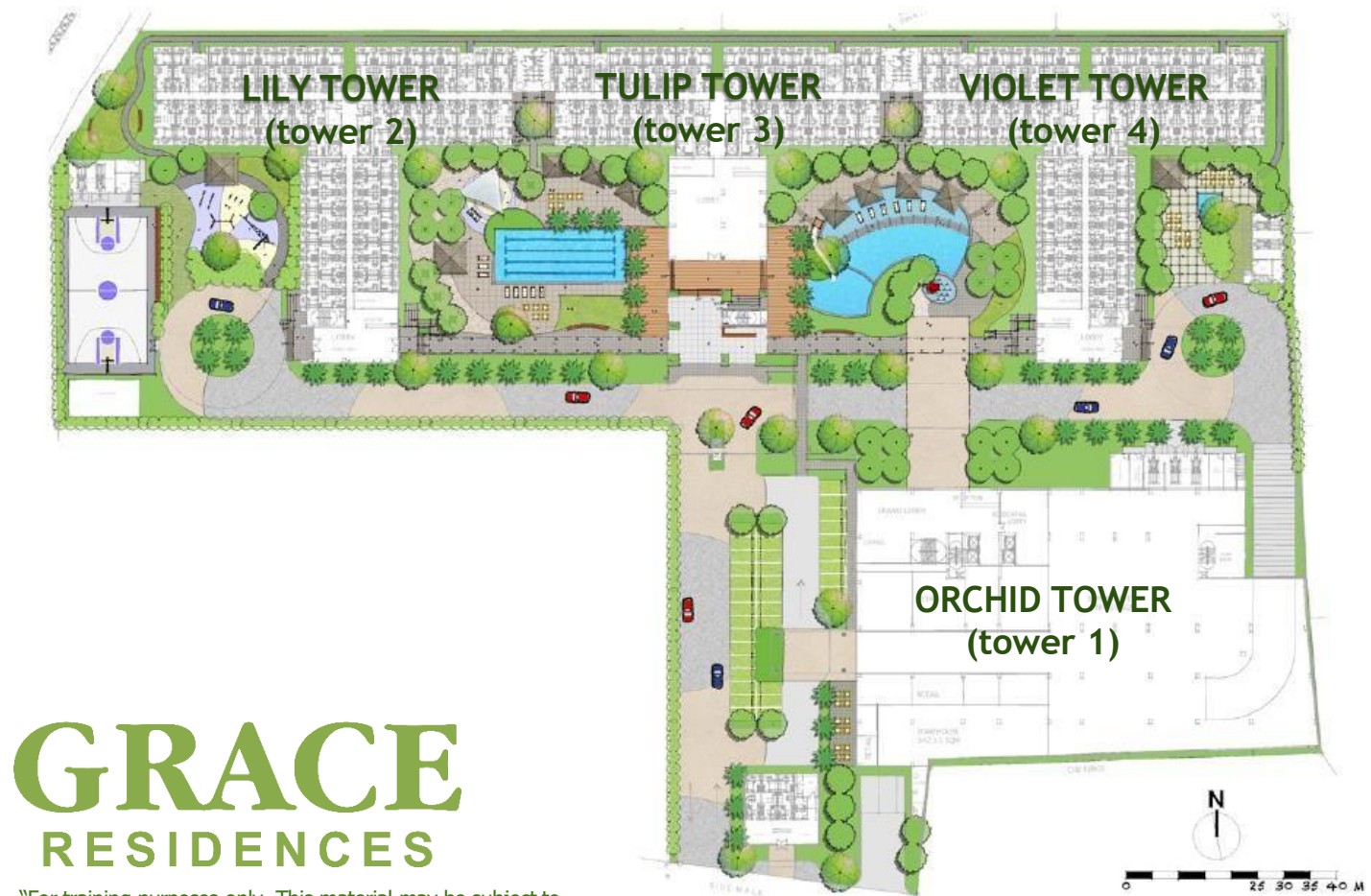
| | | |
|-----------------------|-------------|------------|
| No. of Parking Slots: | Residential | Commercial |
| | 648 slots | 45 slots |

| | |
|---------------|----------------------------|
| Launch Date | July 2012 |
| Turnover Date | All Towers Completed (RFO) |
| Tower 1 | April 19, 2016 |
| Tower 2 | December 19, 2016 |
| Tower 3 | July 17, 2017 |
| Tower 4 | June 30, 2018 |



GRACE
RESIDENCES

site development plan



GRACE
RESIDENCES

"For training purposes only. This material may be subject to change and not for reproduction and distribution without prior consent of developer."



building chart

Tower 1
Orchid Tower

"For training purposes only. This material may be subject to change and not for reproduction and distribution without prior consent of developer."



building perspective

Tower 1 Orchid Tower

| | |
|----------------|------------|
| No. of Units | 174 |
| No. of Storeys | 12 storeys |

"For training purposes only. This material may be subject to change and not for reproduction and distribution without prior consent of developer."



building chart

Tower 2 (Lily Tower)

Tower 3 (Tulip Tower)

Tower 4 (Violet Tower)

"For training purposes only. This material may be subject to change and not for reproduction and distribution without prior consent of developer."



building perspective



Tower 2 Lily Tower

| | |
|----------------|------------|
| No. of Units | 1,168 |
| No. of Storeys | 20 storeys |

"For training purposes only. This material may be subject to change and not for reproduction and distribution without prior consent of developer."



building perspective



Tower 3 Tulip Tower

| | |
|----------------|------------|
| No. of Units | 1,109 |
| No. of Storeys | 20 storeys |

"For training purposes only. This material may be subject to change and not for reproduction and distribution without prior consent of developer."



building perspective

Tower 4 Violet Tower

| | |
|----------------|------------|
| No. of Units | 1,128 |
| No. of Storeys | 20 storeys |

"For training purposes only. This material may be subject to change and not for reproduction and distribution without prior consent of developer."

amenities



GRACE
RESIDENCES

"For training purposes only. This material may be subject to change and not for reproduction and distribution without prior consent of developer."

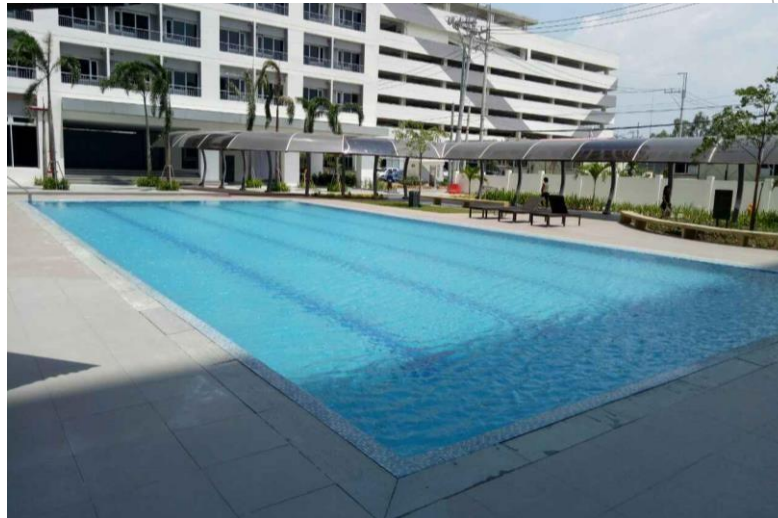
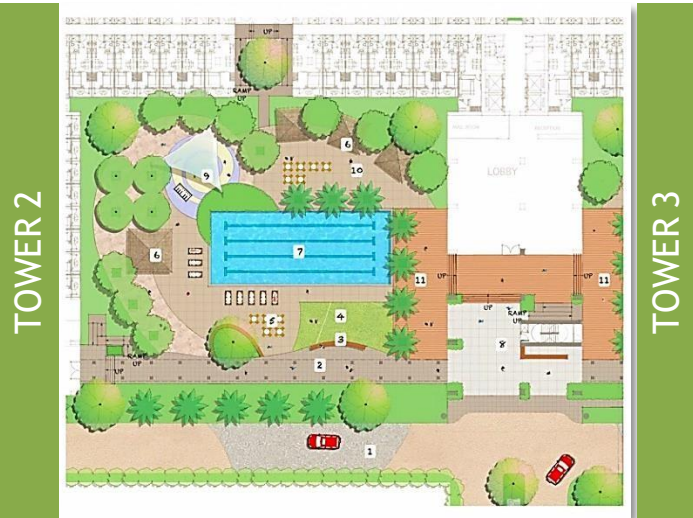
amenities

Play & Active Zone



amenities

Play & Entertain Zone A



amenities

Play & Entertain Zone B

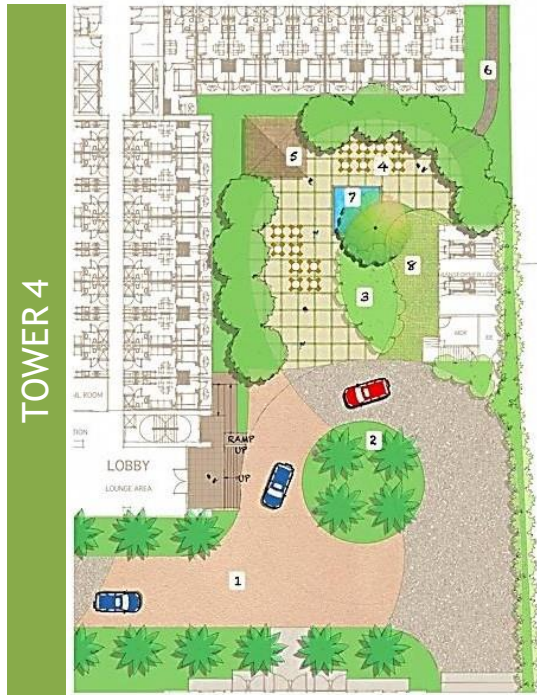


GRACE
RESIDENCES

"For training purposes only. This material may be subject to change and not for reproduction and distribution without prior consent of developer."

amenities

Relax and Regenerate Zone



amenities

Tower Lobbies



GRACE
RESIDENCES

"For training purposes only. This material may be subject to change and not for reproduction and distribution without prior consent of developer."

Grace Mall



watsons



KUMON



Buffalo's
WINGS N' THINGS

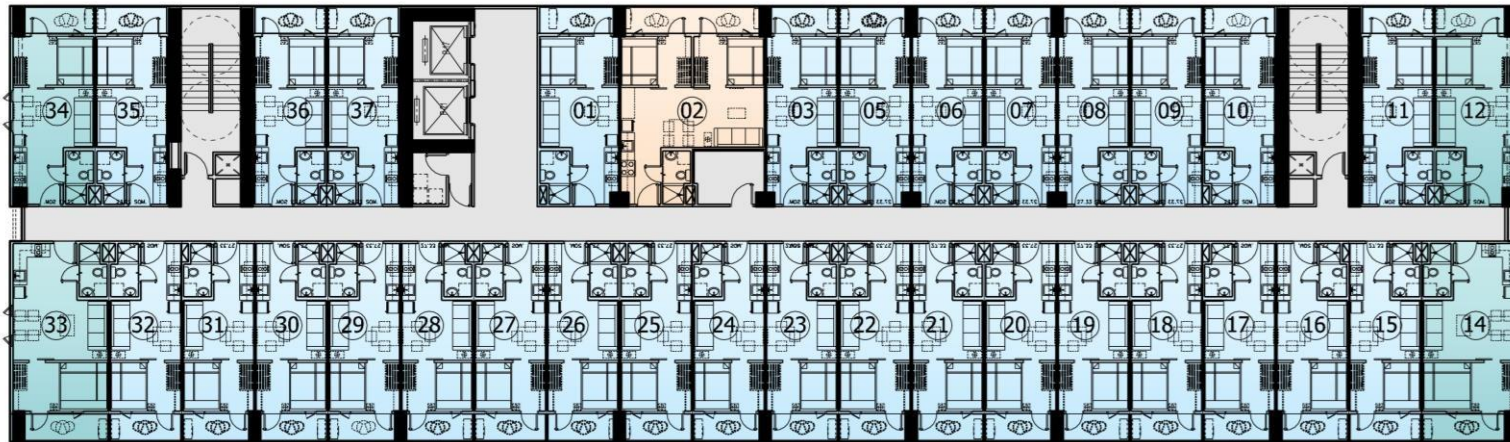
GRACE
RESIDENCES

"For training purposes only. This material may be subject to change and not for reproduction and distribution without prior consent of developer."




typical floor plan

Tower 1 – Orchid Tower

AMENITY VIEW



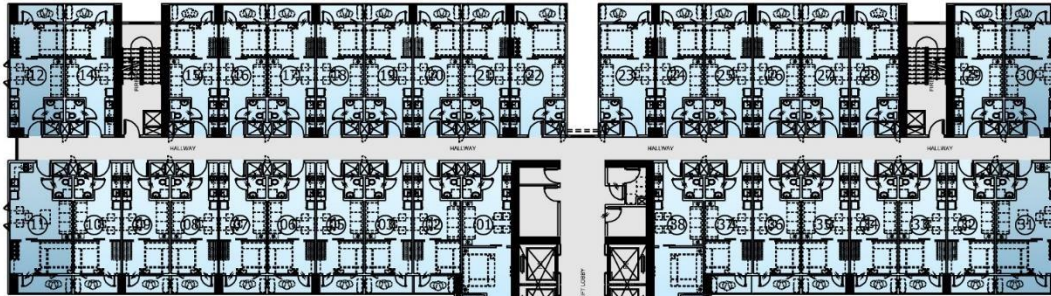
TAGUIG CITYSCAPE VIEW

| | No. of units per floor | Area (sqm.) | Area (sq.ft.) |
|--|---------------------------|---------------|---------------|
|  1 BR with Balcony | 30 | 27.33 - 30.80 | 294 - 331 |
|  1 BR Deluxe with Balcony | 4 | 31.88 - 37.09 | 343 - 399 |
|  2 BR with Balcony | 1 | 46.86 | 504 |
| | 35 | | |

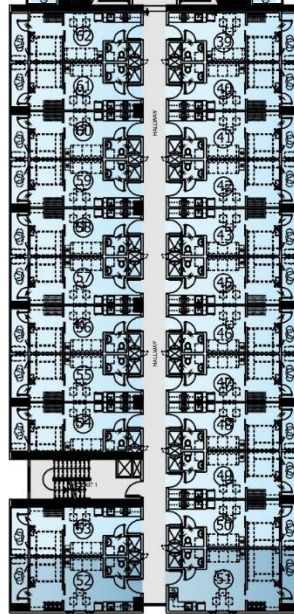
Typical Floor Plan

Tower 2 – Lily Tower

ANTIPOLO HILLS VIEW



FORT-BONI SKYLINE +
AMENITIES VIEW



AMENITY VIEW

- 1 BR with Balcony
- 1 BR Deluxe with Balcony

| | No. of units per floor | Area | Area (sq.ft.) |
|--------------------------|---------------------------|---------------|---------------|
| 1 BR with Balcony | 53 | 27.33 – 36.66 | 294 – 394 |
| 1 BR Deluxe with Balcony | 6 | 31.88 – 36.65 | 343 – 394 |
| | 59 | | |

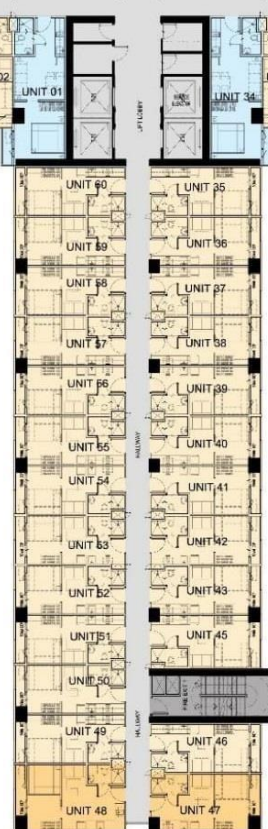
Typical Floor Plan

Tower 3 – Tulip Tower

ANTIPOLO HILLS VIEW



AMENITY VIEW
(Lap Pool)



AMENITY VIEW
(Leisure Pool)

- 1 Bedroom
- 1 BR with Balcony
- 1 BR Deluxe with Balcony

| No. of units per floor | Area (sqm.) | Area (sq.ft.) |
|------------------------|---------------|---------------|
| 2 | 31.00 | 333 |
| 49 | 22.31 – 26.38 | 240 – 284 |
| 6 | 26.02 – 30.62 | 280 – 330 |
| 57 | | |

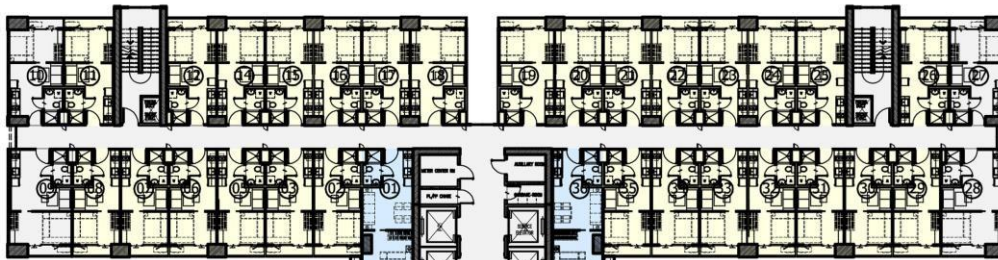
GRACE
RESIDENCES

"For training purposes only. This material may be subject to change and not for reproduction and distribution without prior consent of developer."

Typical Floor Plan

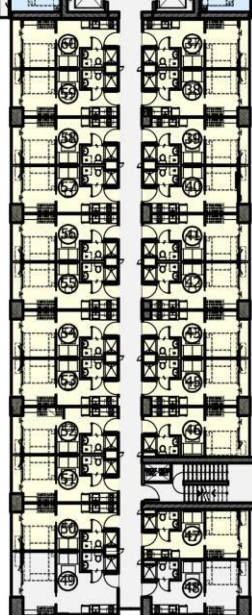
Tower 4 – Violet Tower

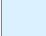


ANTIPOLO HILLS VIEW



AMENITY VIEW
(Leisure Pool)

LAGUNA DE BAY +
AMENITIES VIEW
(Meditation Garden)



| | No. of units per floor | Area (sqm.) | Area (sq.ft.) |
|--|------------------------|---------------|---------------|
|  1 Bedroom | 2 | 31.00 | 333 |
|  1 BR with Balcony | 49 | 22.30 – 26.38 | 240 – 284 |
|  1 BR End Unit with Balcony | 6 | 26.02 – 30.62 | 280 – 330 |
| | 57 | | |

GRACE
RESIDENCES

"For training purposes only. This material may be subject to change and not for reproduction and distribution without prior consent of developer."

unit floor plan



22.3 sqm

GRACE
RESIDENCES



27.33 sqm

1 Bedroom with Balcony
22.31-36.66 sqm (240 – 394 sq.ft.)

"For training purposes only. This material may be subject to change and not for reproduction and distribution without prior consent of developer."

unit floor plan



1 Bedroom End Unit with Balcony
26.02-30.62 sqm (280 – 329 sq.ft.)

unit floor plan



1 Bedroom Unit
31.00 sqm (333 sq.ft.)

unit floor plan



2 Bedroom Unit
46.86 sqm (504 sq.ft.)