

LUXURY BY THE BAY

# Shore 2

R E S I D E N C E S

MALL OF ASIA, PASAY CITY

**SMDC**







# Shore 2

R E S I D E N C E S

MALL OF ASIA, PASAY CITY

## YOUR RIVERFRONT HOME

Shore 2 Residences offers a premier riverfront inspired lifestyle, with pools that stretch throughout the amenity deck of this development. Stroll through the lush landscaped gardens, or indulge in the luxury of lounging in any of the numerous decks.

*For training purposes only. This material may be subject to change and not for reproduction and distribution without prior consent of developer.*



# LUXURY OF PROXIMITY

Move in and be right in the middle of metropolitan life and lights. Built within the SM MOA Complex and Entertainment City, SMDC Shore provides a 360-degree proximity to the best malls, shops, restaurants, and hotels for all unit owners.

## Commercial Areas

*SM Mall of Asia  
SM By the Bay  
S Maison  
Harbor Square  
Blue Bay Walk  
Double Dragon Plaza*

## Entertainment/Recreation

*Mall of Asia Arena  
Dream Play  
Dessert Museum  
Galeon Museum  
Star City*

## Event/Convention Centers

*SMX Convention Center  
One Esplanade  
World Trade Center  
Cultural Center of the Philippines  
Philippine International Convention Center  
City of Dreams Manila  
Solaire Resort and Casino City of Dreams  
Okada*

## Hotels

*Tryp Hotel  
Conrad Hotel  
Microtel  
Hotel 101  
Hyatt Regency  
Hotel Manila  
Nobu Hotel  
Sofitel*

## Leisure

*Manila Yacht Club*

## Business

*E-Com Centers  
SM Corporate Offices*





## PROJECT OVERVIEW

Location	Seaside Blvd., and Sunrise Drive, Mall of Asia Complex, Pasay City	
Lot Area	25,479 sq.m.	
No. of floors	18 physical floors 1 basement floor	
No. of units	5,488 Residential Units	
No. of parking slots		
Classification	Residential / Commercial	
Unit Types		
1 Bedroom w/ Bal w/ Den	90	33.21 – 33.35 sq.m.
1 BR Deluxe	8	32.36 sq.m.
1 BR WITH BALCONY	4,994	24.10 – 30.58 sq.m.
1BR End Unit with Balcony	354	25.46 – 28.78 sq.m.
2 BR DELUXE WITH BALCONY	8	60.53 sq.m
2 BR WITH BALCONY	26	59.13 sq.m
2BR SUITE	6	52.57 sq.m
2BR SUITE W/BAL	2	91.76 sq.m
Launch Date	June 2015	
Turnover Date	November 2019	

**Shore 2**  
RESIDENCES  
MALL OF ASIA, PASAY CITY



*For training purposes only. This material may be subject to change and not for reproduction and distribution without prior consent of developer.*



# **SMDC**

# KEYS TO SUCCESS

**Shore 2**  
RESIDENCES  
MALL OF ASIA, PASAY CITY



**Integration of  
Residential Condos to  
SM Malls**



**Prime Locations  
with access to  
Transport Hubs**



**Hotel-Like  
Lobbies**



**Resort-Styled  
Amenities**



**Professional Property  
Management**



*For training purposes only. This material may be subject to change and not for reproduction and distribution without prior consent of developer.*

# Master Plan



Set in a 9-has property, that is fully-integrated to the SM Mall of Asia Complex.



# Building Facade

**Shore 2**  
RESIDENCES  
MALL OF ASIA, PASAY CITY



*For training purposes only. This material may be subject to change and not for reproduction and distribution without prior consent of developer.*



# Amenity Level

**Shore 2**  
RESIDENCES  
MALL OF ASIA, PASAY CITY



*For training purposes only. This material may be subject to change and not for reproduction and distribution without prior consent of developer.*



# Lap Pool

---

**Shore 2**  
RESIDENCES  
MALL OF ASIA, PASAY CITY



*For training purposes only. This material may be subject to change and not for reproduction and distribution without prior consent of developer.*



# Lap Pool



*For training purposes only. This material may be subject to change and not for reproduction and distribution without prior consent of developer.*



# Tower Lobby

**Shore 2**  
RESIDENCES  
MALL OF ASIA, PASAY CITY



*For training purposes only. This material may be subject to change and not for reproduction and distribution without prior consent of developer.*



# Site Development Plan

**Shore 2**  
RESIDENCES  
MALL OF ASIA, PASAY CITY

DIOSDADO MACAPAGAL BOULEVARD

SEASIDE BOULEVARD



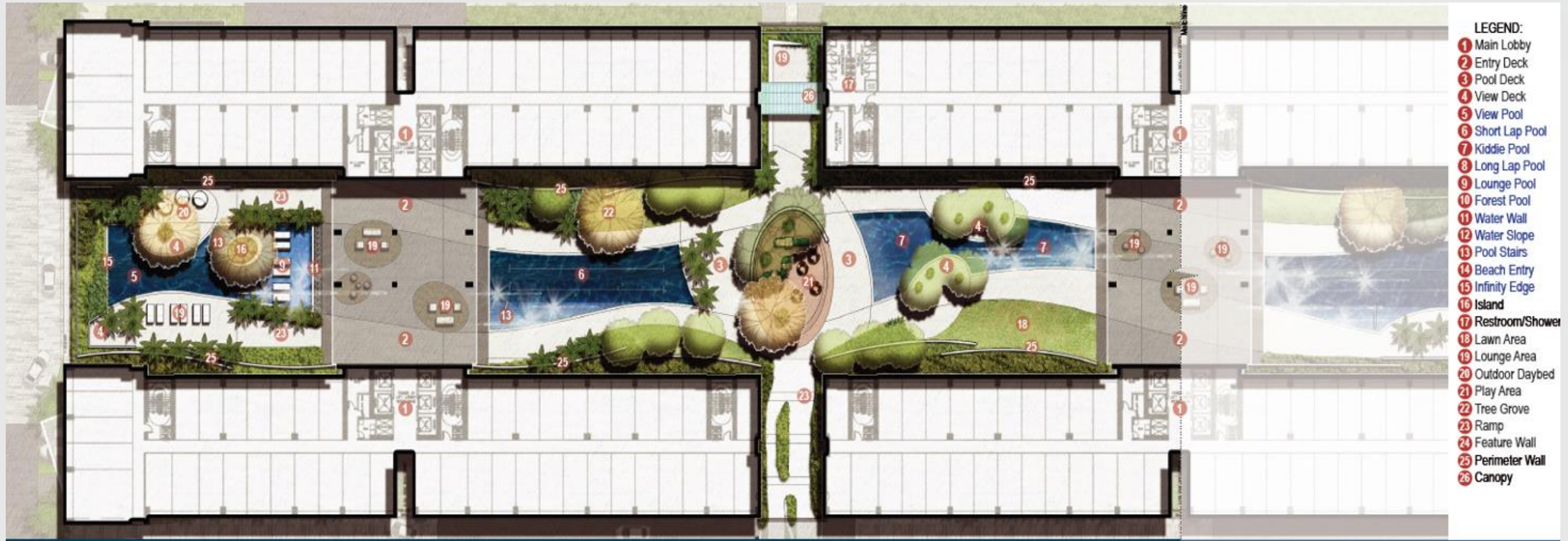
SHORE 3 RESIDENCES

SHORE 1 RESIDENCES



# Site Development Plan

## North Block Towers 1 and 2





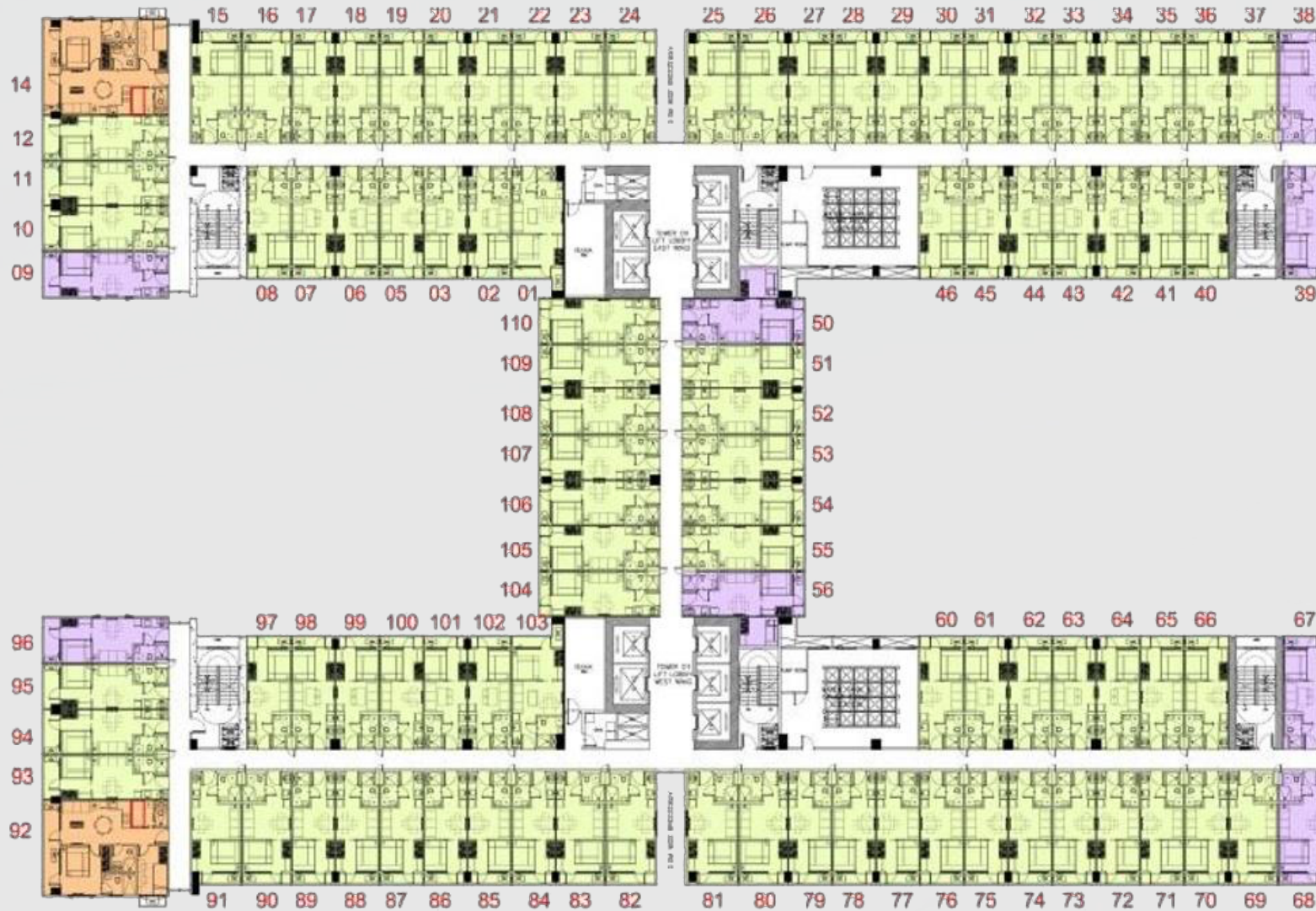
# Site Development Plan

## South Block Towers 2 and 3



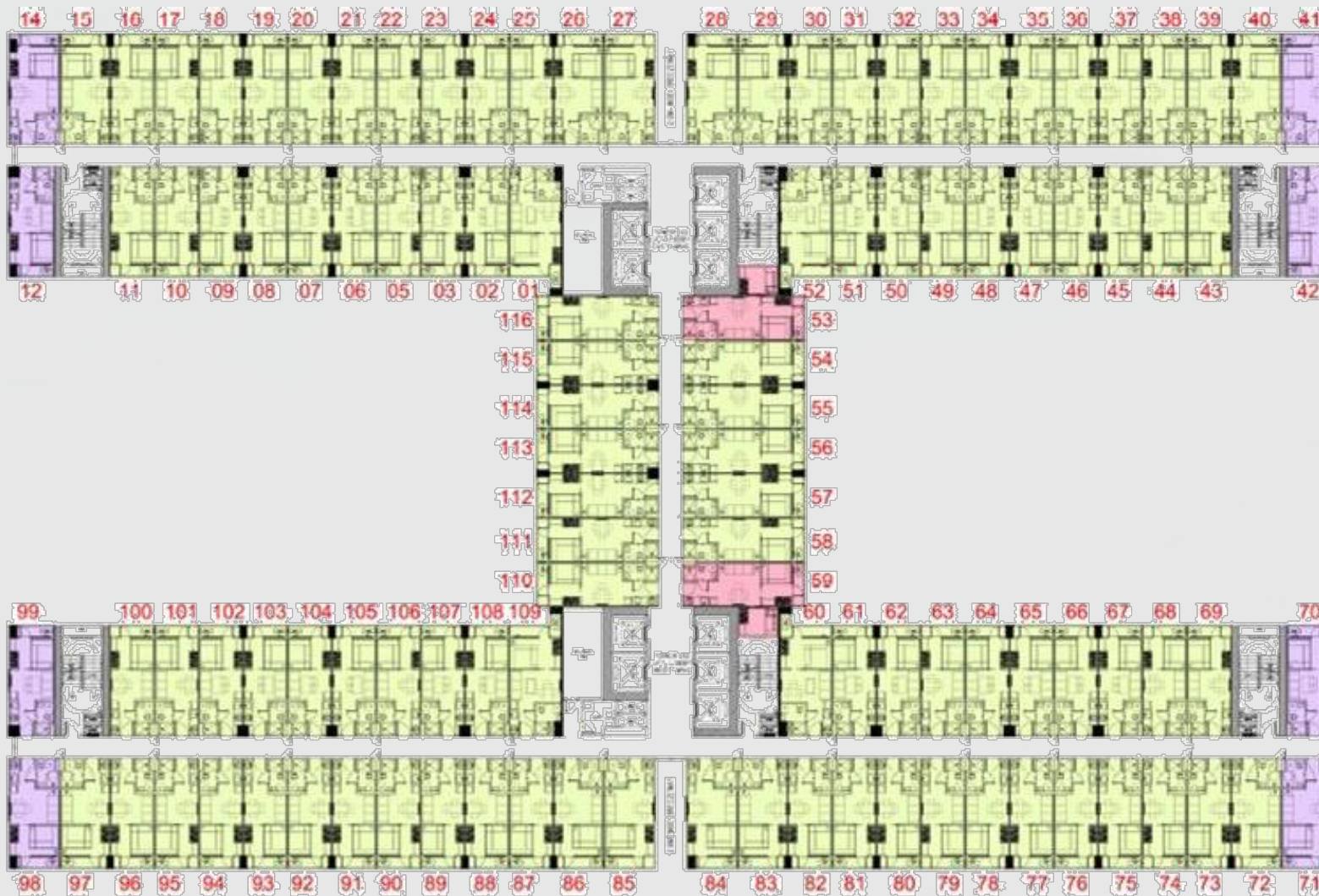


# Tower 1 Layout





# Tower 2 Layout





# Tower 3 Layout





# Unit Layout



**1 Bedroom with Balcony**  
Ave. ± 24.10 sqm



**1 Bedroom with Balcony**  
Ave. ± 26.58 sqm



**1 Bedroom with Balcony**  
Ave. ± 27.67 sqm



# Unit Layout



**1 Bedroom End Unit with  
Balcony**  
Ave. ± 25.46 sqm



**1 Bedroom End Unit with  
Balcony**  
Ave. ± 28.19 sqm



**1 Bedroom End Unit with  
Balcony**  
Ave. ± 28.78 sqm



# Unit Layout



## 2 Bedroom with Balcony Ave. $\pm$ 59.13 sqm

PRICE RANGE	
MIN	MAX
17,855,500	18,343,300



# Unit Layout



## 1-Bedroom Unit with Balcony

**Shore 2**  
RESIDENCES  
MALL OF ASIA, PASAY CITY



*For training purposes only. This material may be subject to change and not for reproduction and distribution without prior consent of developer.*



# Unit Layout



## 2-Bedroom Suite



**Shore 2**  
RESIDENCES  
MALL OF ASIA, PASAY CITY





# SMDC GOOD STAYS

---



*For training purposes only. This material may be subject to change and not for reproduction and distribution without prior consent of developer.*

# SERVICES OFFERED

## Long-Term Lease Enrollment Package

Basic & Premium

## Daily Lease Enrollment Package

Key Areas

## Tenancy Management Cleaning, Repair, Maintenance, & Messengerial Services

## Unit Furnishing Package Partnership with Our Home, SM Home, SM Appliance, & Ace Hardware





**SMDC GOOD STAYS**

**Your trusted leasing and  
tenancy management group**

**FOR INQUIRIES**

You may contact us at:

mobile number



**+63-917-552-5943 (Globe)**

e-mail address



**[smdc.leasing@smdevelopment.com](mailto:smdc.leasing@smdevelopment.com)**

landline number



**+863-8857-0300 local 0328**

*For training purposes only. This material may be subject to change and not for reproduction and distribution without prior consent of developer.*